



ERF Polyclonal Antibody

Catalog No	YP-Ab-01701
Isotype	IgG
Reactivity	Human;Mouse
Applications	WB;IHC;IF;ELISA
Gene Name	ERF
Protein Name	ETS domain-containing transcription factor ERF
Immunogen	The antiserum was produced against synthesized peptide derived from human ERF. AA range:492-541
Specificity	ERF Polyclonal Antibody detects endogenous levels of ERF protein.
Formulation	Liquid in PBS containing 50% glycerol, 0.5% BSA and 0.02% sodium azide.
Source	Polyclonal, Rabbit,IgG
Purification	The antibody was affinity-purified from rabbit antiserum by affinity-chromatography using epitope-specific immunogen.
Dilution	Western Blot: 1/500 - 1/2000. Immunohistochemistry: 1/100 - 1/300. Immunofluorescence: 1/200 - 1/1000. ELISA: 1/10000. Not yet tested in other applications.
Concentration	1 mg/ml
Purity	≥90%
Storage Stability	-20°C/1 year
Synonyms	ERF; ETS domain-containing transcription factor ERF; Ets2 repressor factor; PE-2
Observed Band	
Cell Pathway	Nucleus.
Tissue Specificity	Highest levels in testis, ovary, pancreas, and heart.
Function	function:Potent transcriptional repressor that binds to the H1 element of the Ets2 promoter. May regulate other genes involved in cellular proliferation. Required for extraembryonic ectoderm differentiation, ectoplacental cone cavity closure, and chorioallantoic attachment (By similarity). May be important for regulating trophoblast stem cell differentiation.,PTM:Phosphorylated by multiple kinases including probably ERK2. Phosphorylation regulates the activity of ERF.,sequence caution:The sequence differs from that shown because it seems to be derived from a pre-mRNA.,similarity:Belongs to the ETS family.,similarity:Contains 1 ETS DNA-binding domain.,tissue specificity:Highest levels in testis, ovary, pancreas, and heart.,
Background	ETS2 is a transcription factor and protooncogene involved in development, apoptosis, and the regulation of telomerase. The protein encoded by this gene



binds to the ETS2 promoter and is a strong repressor of ETS2 transcription. Several transcript variants encoding two different isoforms have been found for this gene. [provided by RefSeq, Aug 2015],

matters needing attention

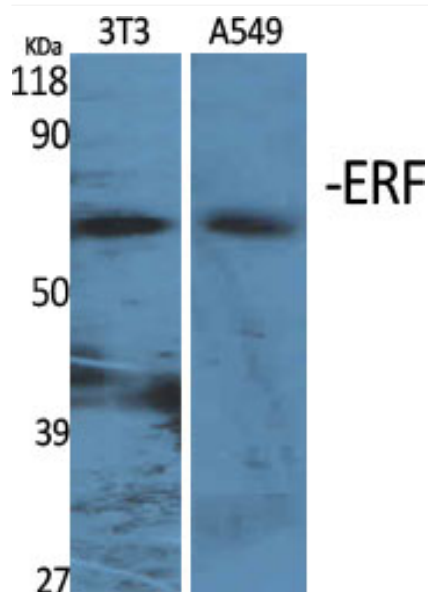
Avoid repeated freezing and thawing!

Usage suggestions

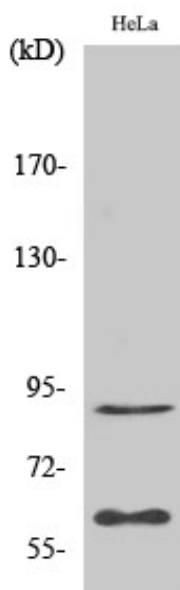
This product can be used in immunological reaction related experiments. For more information, please consult technical personnel.



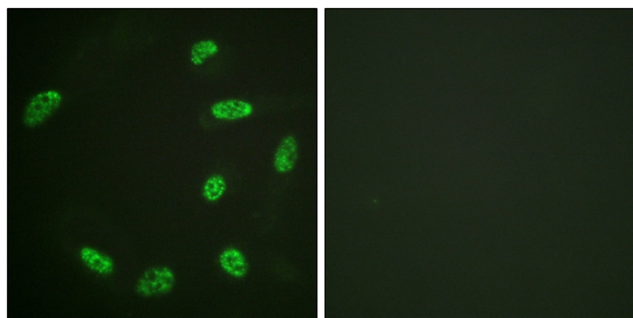
Products Images



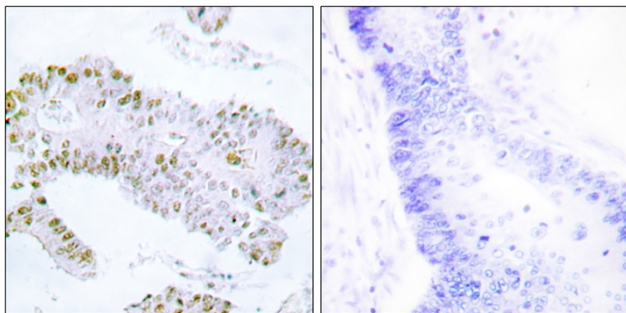
Western Blot analysis of various cells using ERF Polyclonal Antibody cells nucleus extracted by Minute TM Cytoplasmic and Nuclear Fractionation kit (SC-003, Inventbiotech, MN, USA).



Western Blot analysis of HepG2 cells using ERF Polyclonal Antibody cells nucleus extracted by Minute TM Cytoplasmic and Nuclear Fractionation kit (SC-003, Inventbiotech, MN, USA).



Immunofluorescence analysis of HeLa cells, using ERF Antibody. The picture on the right is blocked with the synthesized peptide.



Immunohistochemistry analysis of paraffin-embedded human colon carcinoma tissue, using ERF Antibody. The picture on the right is blocked with the synthesized peptide.